

# CC100 SERIES

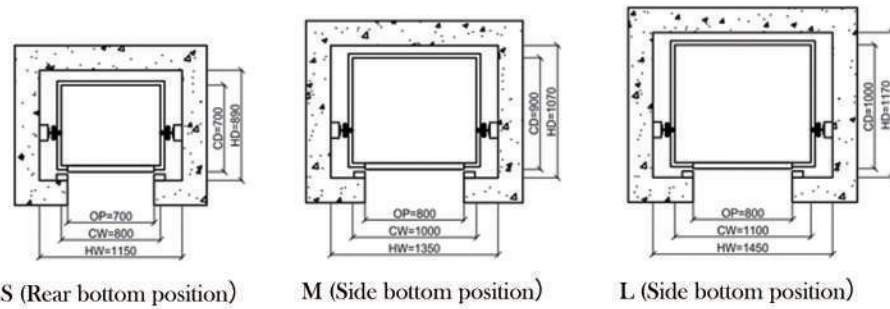
Strong Drive Home Lift

Parameters >

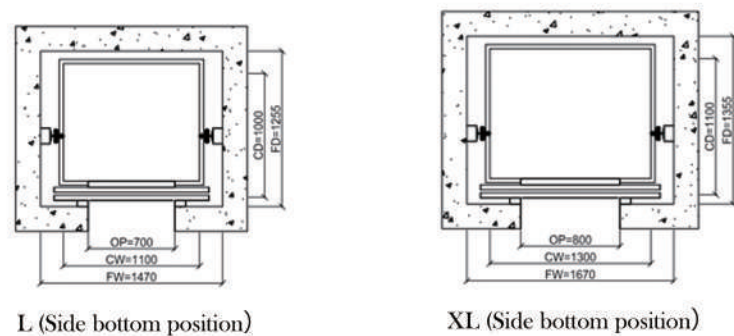
# CC100 SERIES

Standard Specification

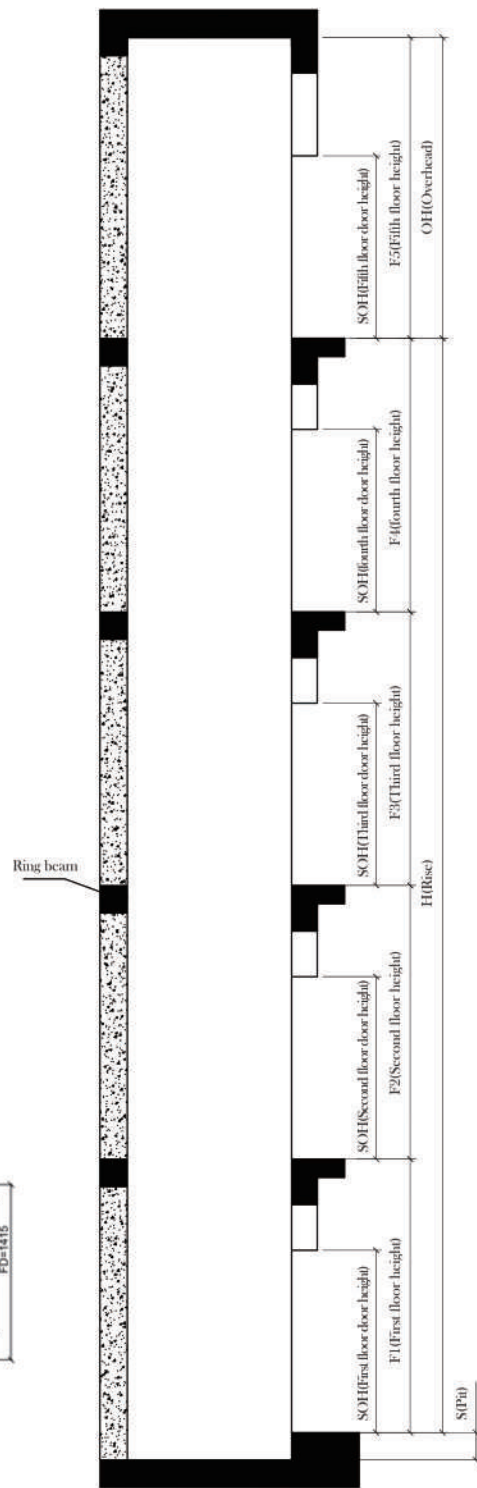
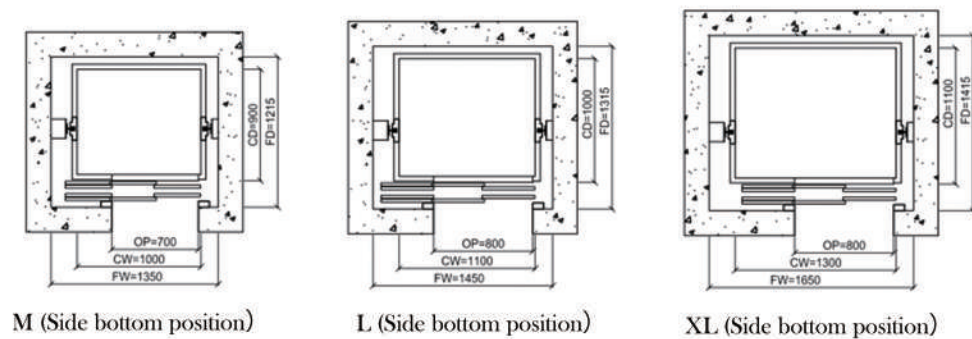
## Swing Door CC110



## Center Opening Door CC120



## Side Opening Door CC130



Model	CC110					CC120				CC130					
Shaft type	Concrete														
Opening type	Swing door(Handle on the right,open the door to the right)					Center opening door				Side opening door					
NO.	1	2	3	4	5	6	7	8	9	10	11	12	13	14	15
Person	3	3-4		4-5		4-5		5-6		3-4		4-5		5-6	
Area(m <sup>2</sup> )	S	M	L		L		XL		M		L		XL		
	0.5-0.7	0.7-0.9	0.9-1.2		0.9-1.2		1.2-1.6		0.7-0.9		0.9-1.2		1.2-1.6		
Car width (CW)	800	1000	1100		1100		1300		1000	1100		1300			
Car depth (CD)	700	900	1000		1000		1100		900	1000		1100			
Car high (CH)	2100														
Door opening width(OP)	700	800		700		800		700	800		700		800		
Door opening height(OPH)	2000														
Machine position (ML)	Rear	Side	Rear	Side	Rear	Side	Rear	Side	Rear	Side	Rear	Side	Rear	Side	Rear
Shaft width (HW)	1150	1350	1350	1450	1450	1470	1470	1670	1670	1350	1350	1450	1450	1650	1650
Shaft depth (HD)	890	1070	1090	1170	1190	1255	1275	1355	1375	1215	1235	1315	1335	1415	1435
Pit(S)	200														

Note: All unlabeled dimensions are in millimeters

# CF100 SERIES

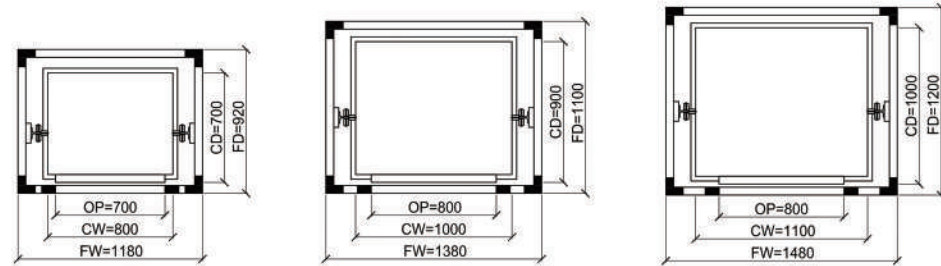
Strong Drive Home Lift

Parameters >

# CF100 SERIES

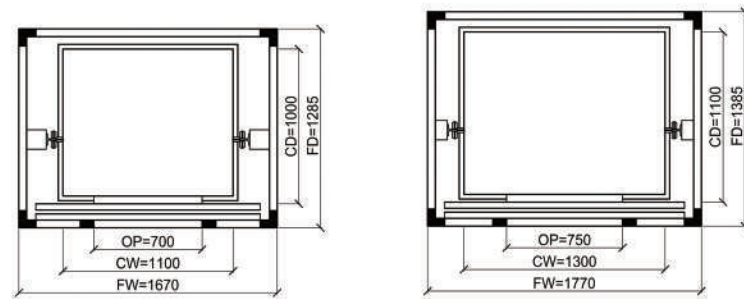
Standard Specification

## Swing Door CF110



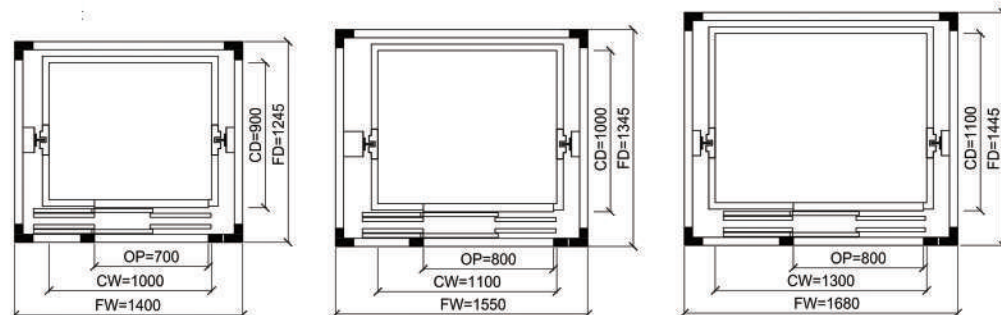
S (Rear bottom position) M (Side bottom position) L (Side bottom position)

## Center Opening Door CF120

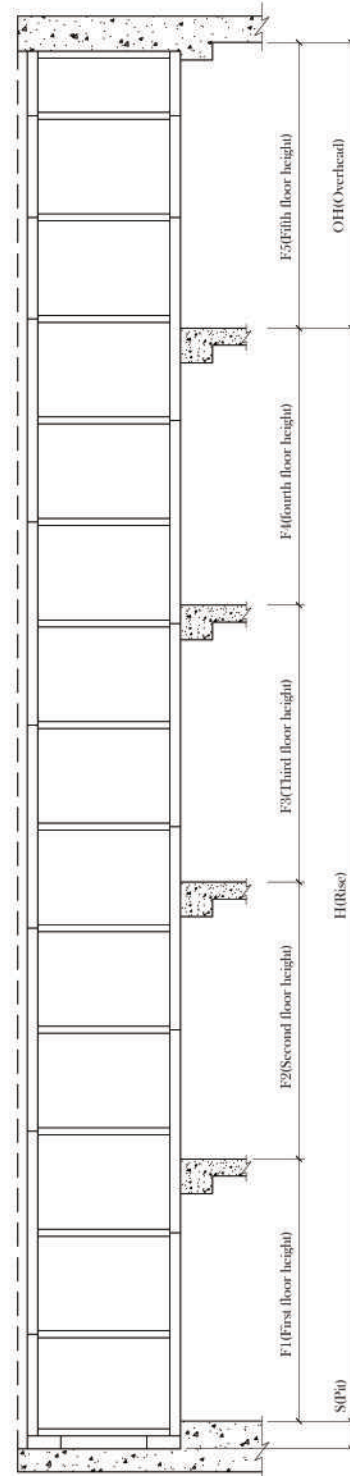


L (Side bottom position) XL (Side bottom position)

## Side Opening Door CF130



M (Side bottom position) L (Side bottom position) XL (Side bottom position)



Model	CF110					CF120				CF130						
Shaft type	Aluminum frame															
Opening type	Swing door(Handle on the right,open the door to the right)					Center opening door				Side opening door						
NO.	1	2	3	4	5	6	7	8	9	10	11	12	13	14	15	
Person	3		3-4		4-5		4-5		5-6		3-4		4-5		5-6	
Area(m <sup>2</sup> )	S		M		L		L		XL		M		L		XL	
	0.5-0.7		0.7-0.9		0.9-1.2		0.9-1.2		1.2-1.6		0.7-0.9		0.9-1.2		1.2-1.6	
Car width (CW)	800	1000	1100	1100	1300	1000	1100	1300	1000	1100	1300	1000	1100	1300	1000	1100
Car depth (CD)	700	900	1000	1000	1100	900	1000	1100	900	1000	1100	900	1000	1100	900	1000
Car high (CH)	2100															
Door opening width(OP)	700	800				700	750	700	800		700	800		700	800	
Door opening height(OPH)	2000															
Machine position (ML)	Rear	Side	Rear	Side	Rear	Side	Rear	Side	Rear	Side	Rear	Side	Rear	Side	Rear	Side
Frame width (FW)	1180	1380	1380	1480	1480	1670	1670	1770	1770	1400	1400	1550	1550	1680	1680	
Frame depth (FD)	920	1100	1120	1200	1220	1285	1305	1385	1405	1245	1265	1345	1365	1445	1465	
Shaft width (HW)	1200	1400	1400	1500	1500	1690	1690	1790	1790	1420	1420	1570	1570	1700	1700	
Shaft depth (HD)	930	1110	1130	1210	1230	1295	1315	1395	1415	1255	1275	1355	1375	1455	1475	
Pit(S)	200															

Note: All unlabeled dimensions are in millimeters